



## PC Based Price Check System

### Product Overview

PRODUCT SUMMARY .....	2
SYSTEM SUMMARY .....	3
MOBILeRF COMMUNICATIONS MANAGER .....	4
PRICECHECK! REPORTS .....	6
PRICECHECK! DISPLAY EDITOR .....	7
IMPORT/EXPORT TEMPLATES .....	8
COMMUNICATION ENVIRONMENTS .....	10



## Product Summary

**PriceCheck! powered by MOBILeTY** is an easy to install, easy to deploy solution involving both hardware and software to provide in-store price checking.

It is designed to operate with the Partner Tech SG15 and provide the customer with a kiosk-like walk up and scan self server interface. **PriceCheck! powered by MOBILeTY** supports either a wireless 802.11G secure deployment or a wired (power of Ethernet) connection.

The system uses a single, simple file interface to your ERP system and provides evaluation and operational reporting.

**PriceCheck! powered by MOBILeTY** comes with an SQL express database console for import, edit, export, and reporting on the system.

Reporting is provided to establish:

- Device Use by Location
- SKU/PLU/Item Inquiry Frequency
- Operational Real Time Reporting

Data can be imported from the user's ERP system or manually entered.

Data can be exported from the system to provide external analysis.

**PriceCheck! powered by MOBILeTY** provides for TCP/IP price check request and response. The module uses the embedded communications for the Partner Tech SG-15 and requires no additional terminal software.

**PriceCheck! powered by MOBILeTY** comes with an easy to use Price Check Display Editor that allows the end user to format the response shown to the customer, picking the fields, fonts, and placement of the message.

The system does not provide for the installation of LAN/CAT5 power or access point placement.

Access points, remote support software, and all peripheral equipment are not included.

## System Summary

**PriceCheck! powered by MOBILeTY** is a software and hardware system that provides for an easy to set up, install, and use price check system for any and all retailers.

### System Features

The system comes with a standard import template allowing for data to be imported from the system to also provide analysis for the user to manipulate in standard format (CSV). Data can be exported from the system in a standard template format (CSV).

### System Requirements

**PriceCheck! powered by MOBILeTY** operates in, Windows XP Pro, Windows 7, and Windows Server 2008. It requires either a hub/switched based 10/100 LAN for TCP/IP communications or an 802.11g WiFi network.

### System Components

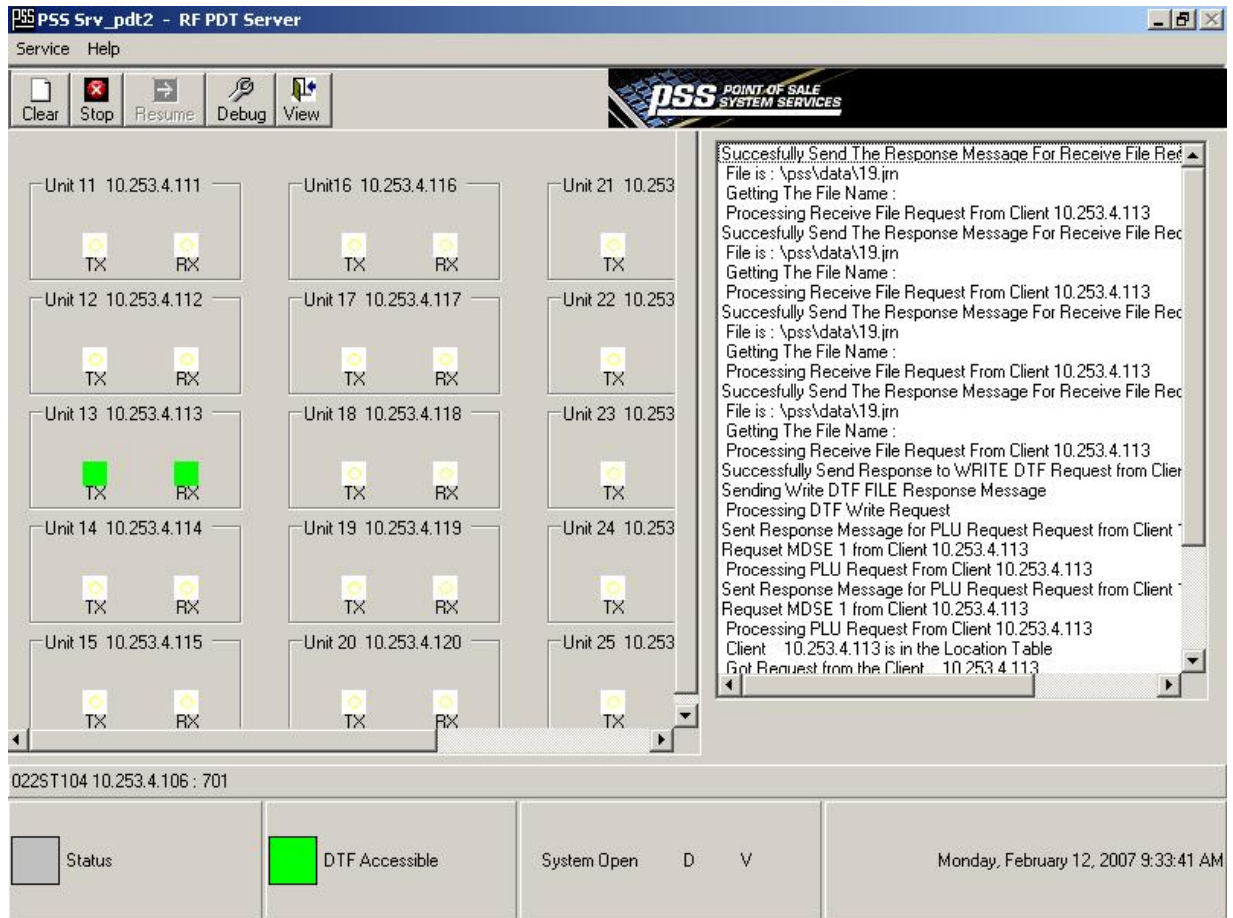
- |   |  |
|---|--|
| <b>MOBILeRF ~ Communications Manager:</b> | A command and control console providing communications control and reporting.                                    |
| <b>PriceCheck! ~ Display Editor:</b>      | A Windows based application that allows for the modification and control of the <b>MOBILeTY</b> engine.          |
| <b>PriceCheck! ~ Import Template:</b>     | A configuration set up for importing the SKU/PLU/Item file into the <b>MOBILeTY</b> SQL database.                |
| <b>PriceCheck! ~ Export Template:</b>     | A configuration set up for exporting SKU/PLU/Item/Kiosk usage information from the <b>MOBILeTY</b> SQL database. |
| <b>PriceCheck! ~ Reports:</b>             | A set of reports to provide analysis of system usage.  |

## MOBILERF Communications Manager

All communication from the SG15 units is processed and managed by the dashboard **MOBILERF**.

**MOBILERF** provides a command and control console for the operation of the TCP/IP LAN environment for the **PriceCheck!** system.

**MOBILERF** is a companion product to **MOBILEDB**, providing front end I/O to the SQL database.



This command and control console provides the remote functions of message processing, file look-up, transaction validation, DTF/TLOG write, peripheral and supplementary processing, launching, and menu access.



# MOBILERF Controls

Clear – Clears the activity window.

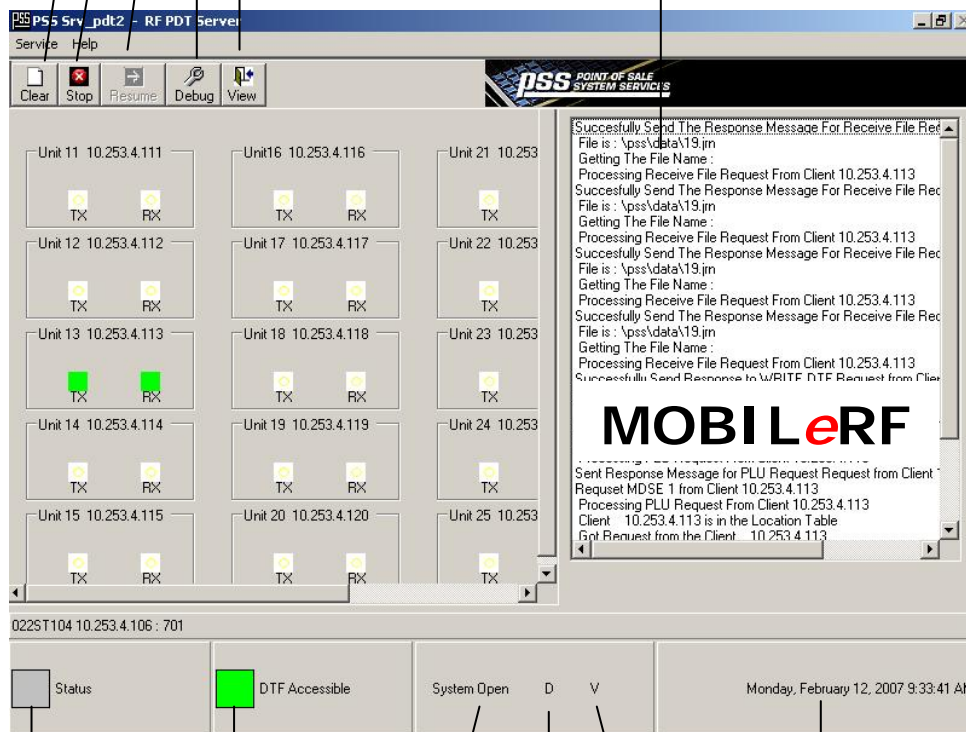
Stop – Stops the communication between PDT(s) and server.

Resume – Starts the communication between PDT(s) and server.

Debug – Toggles on and off the debug logging messages in the pss Log00.pss.

View – Toggles on and off the display of the activity window.

System Activity Window



Server Comm Status

DTF Status

D = Debug is on.

V = Activity window is on.

System Date & Time

System Open = System is active.

System Close = System is temporarily disabled.

## PriceCheck! Reports

PriceCheck! reports provide a view of system usage by SKU/PLU/Item, by comparative use of the kiosk, and by use of the kiosk over time.

Time:	11:00:00	Scans By SKU		
Date:	05-Oct-2010			
SKU/PLU/ITEM	Terminal	Scans	Price	Tran %
846629000591	Droid Glare Protector	7	\$9.99	46.67
070049077378	Mens Shoe Lace 36"	5	\$3.99	33.33
070982010625	Lint Pic Up Roller	2	\$4.99	123.33
04010401	MikyWay Midnight Dark	1	\$0.99	6.67
<b>Totals</b>		15		100

Time:	23:00:00	Scans By Terminal	
Date:	05-Oct-2010		
Location	Terminal	Scan Count	Scan %
<b>Mens</b>	192.168.1.222	55	27.50
<b>Womens</b>	192.168.1.225	35	17.50
<b>Childrens</b>	192.168.1.227	75	37.50
<b>Cosmetics</b>	192.168.1.229	35	17.50
<b>Totals</b>		200	100.0

Time:	13:30:30	Scans By Time	
Date:	05-Oct-2010		
Period	Terminal	Scans	Tran %
Ending			
10:00-10:30	192.168.1.222	5	9.09
10:30-11:00	192.168.1.222	10	18.18
11:00-11:30	192.168.1.222	3	5.45
11:30-11:30	192.168.1.222	2	3.64
11:00-112:00	192.168.1.222	7	12.73
12:00-12:30	192.168.1.222	13	23.64
12:30-13:00	192.168.1.222	0	0
13:00-13:30	192.168.1.222	15	27.27
<b>Totals</b>		55	100.0

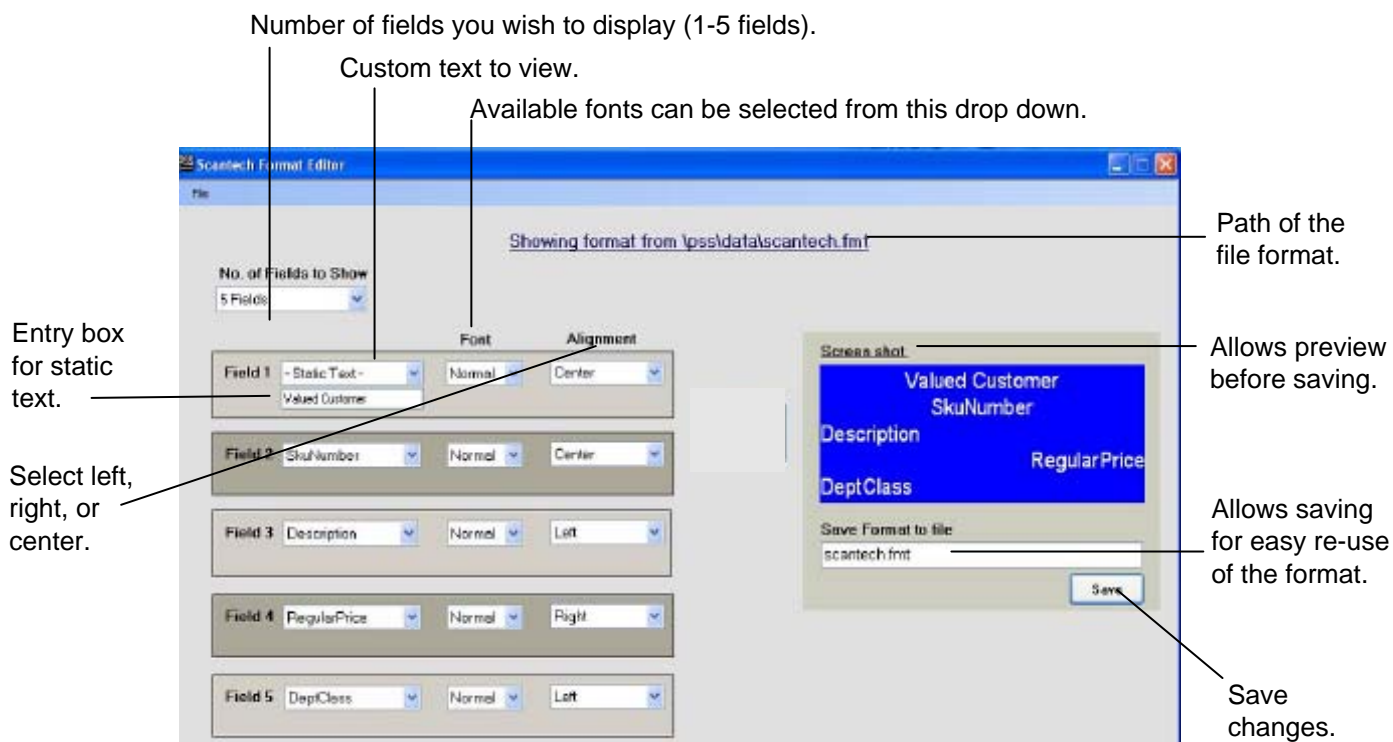
PriceCheck! reports can be initiated from the **MOBILEDB** console.

## PriceCheck! Display Editor

PriceCheck! display format editor provides a GUI intuitive configuration editor, allowing for simple development of the user's desired PriceCheck! presentation.

The editor allows for the user to define the font setting for the characters displayed with optional three or five lines of display. Each line supports up to 20 characters. The editor also allows for customizing the following parameters:

- Cursor Control
- Clearing the Display
- Aligning Text



The PriceCheck! powered by MOBILETY configurations can be saved for easy use in the future or quick re-assignments.

## Import/Export Templates

### Import

**PriceCheck!** *powered by MOBILeTY* provides a template for the importation of the SKU/PLU/Item file.

This can be useful when dealing with larger files.

The format template allows for the export of the file from the user's ERP system in a standard .CSV format and can be imported automatically or manually from the **MOBILEDB** console. Below is the outline of the template for importation.

Master Price & Alternate Price field definitions					
Field #	Field Name	Format	Max Length	SBF's Description	Delimiter
1	SKU number	ASCII	14 var.	SBF Item #	,
2	Tax/Price Type 1	ASCII	2	80 = Alternate Tax - user price in regular price field 20 = No tax and Prompt for Price A0 = Alternate tax and Prompt for Price	,
3	Regular price	ASCII	6.2	Price	,
4	Description	ASCII	38	Description	,
5	Promo Flags	ASCII	1	0 = No discount 4 = Default CAWSE discount 5 = Alternate discount	,
6	Non Merch Merch Flag	ASCII	6	Flags data as: 1 = non mdse 0 = mdse	,
7	Gift Certificate Prompt	ASCII	6	Applies only to Gift Certificates and One 4 Books: 1 = Prompt for Gift Certificate # 0 = Do not prompt for any additional information	,
8	Item #	ASCII	20 var.	Item # - used to link to Merchandise Report	

Item List							
Field:	Item	Tax Type	Price	Category	Description	UPC	Add'l Info
Alpha, Numeric or Both	A/N	A/N	Num	Num	A/N	Num	A/N
Size:	Max 12	2	4.2	Max 4	Max 30	Max 30	Max 30
1							
2							
3							
4							
5							
6							
7							
8							
9							
10							



Export

**PriceCheck!** powered by **MOBILETY** provides a template for the exporting of the productivity file.

This can be used for external analysis of the **PriceCheck!** system usage.

The export template allows for the creation of a file in a standard .CSV structure. Export is manually initiated from the **MOBILEDB** console. Below is an example of the export file and the file values.

**Example of an 02 File**

```

1      2      3      4 5      6 7
02,009903123456780099876543000424,5/28/2009 10:03:00 AM,1,1,001005,,
8      9      10 11 12 13      16 19
198979,BT1111610001,00,19.99,,TIN CAN,,,,1.00,,,NO,
                                     14-15      17-18
    
```

#	02 Record - Merchandise	Description
1	Record ID	Number to identify the type of record.
2	Transactional Key	Concatonation of CompanyID, StoreNumber, TerminalNumber, TransactionNumber.
3	Tran Date/Time	The date and time the transaction occurred.
4	Store #	The store number the transaction occurred.
5	Terminal #	The terminal number the transaction occurred.
6	Transaction #	A unique transaction number for the current device.
7	Employee#	The employee number.
8	Link ID	An autogenerated database number that is used to link all the corresponding records for one transaction together.
9	SKU	Item purchased.
10	Tax Type	Tax Type. 0 = No tax, 1 = Standard Tax, 5 = Alternate tax
11	Unit Price	Item price.
12	Dept/Class	Department number associated with the item.
13	Description	Item description
14	Option 1	Memo data
15	Option 2	Memo data
16	Quantity Sold	Quantity
17	Scan vs Keyed	0 = keyed, 1 = scanned, null = keyed
18	Non-Mdse Flag	1 = Non merchandise item, Null = standard item
19	Void Item Flag	Yes = Item has been voided. No = Item is valid



## Communication Environments

**PriceCheck! powered by MOBILeTY** communicates through wireless RF or hard wired Ethernet. The system can support both communication environments simultaneously. The system hardware (Partner Tech SG15) can support power over Ethernet (POE).

