

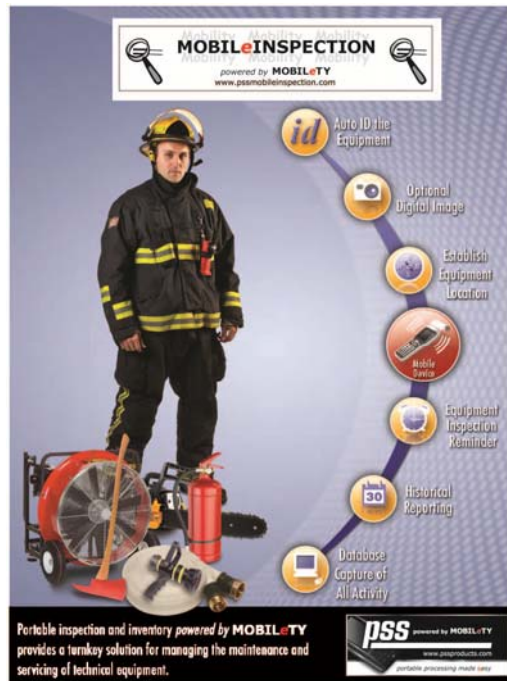
MOBILEINSPECTION

pssmobileinspection.com

PC Based Equipment Inspection

Product Overview

PRODUCT SUMMARY	2
SYSTEM SUMMARY	3
MOBILEINSPECTION SCREEN DISPLAY.....	4
MOBILEDB - MOBILEINSPECTION DATABASE MANAGER.....	5
MOBILEDB CONTROLS	6
MOBILEINSPECTION LABEL FORMAT	7
IMPORT/EXPORT TEMPLATES.....	8
COMMUNICATION ENVIRONMENTS	10
MOBILEINSPECTION REPORTS	11
MOBILEINSPECTION SYSTEM REQUIREMENTS	13



PDTN09258



Product Summary

MOBILEINSPECTION is an easy to install, easy to deploy solution of hardware and software to provide equipment registration, inspection, maintenance recording, and reports.

It is designed to operate with a select line of approved mobile data collection devices and provide the operating organization with a mobile equipment history solution.

The system uses a PC based console for access from any location to allow for maintenance/reporting and export/import of system data.

The handheld provides for capture of:

- Item ID
- Description
- Location
- Service Status
- Service/Maintenance Details & Sub Values

The PC console provides the facility for entry and maintenance of the:

- Items
- Maintenance Capture Data
- Historical Reporting
- Equipment Updates
- Inspection and Maintenance

MOBILEINSPECTION communicates using USB/Ethernet and (optionally) broadband secure communication between the devices and the PC console.

MOBILEINSPECTION comes with a standard label format but can be modified to support custom ticket stock.

System Summary

MOBILEINSPECTION is a handheld driven, PC based solution for providing equipment maintenance tracking. As a result, installation and set up are simple and require no significant effort.

System Features

The field product consists of a ruggedized PDT (Personal Data Terminal) loaded with a touch screen GUI, ATM style application that provides both the equipment registration, as well as the maintenance recording.

The management portion of the application is a PC based console that supplies the functionality for managing both the databases used in the field devices and the reporting tools and system status.

System Requirements

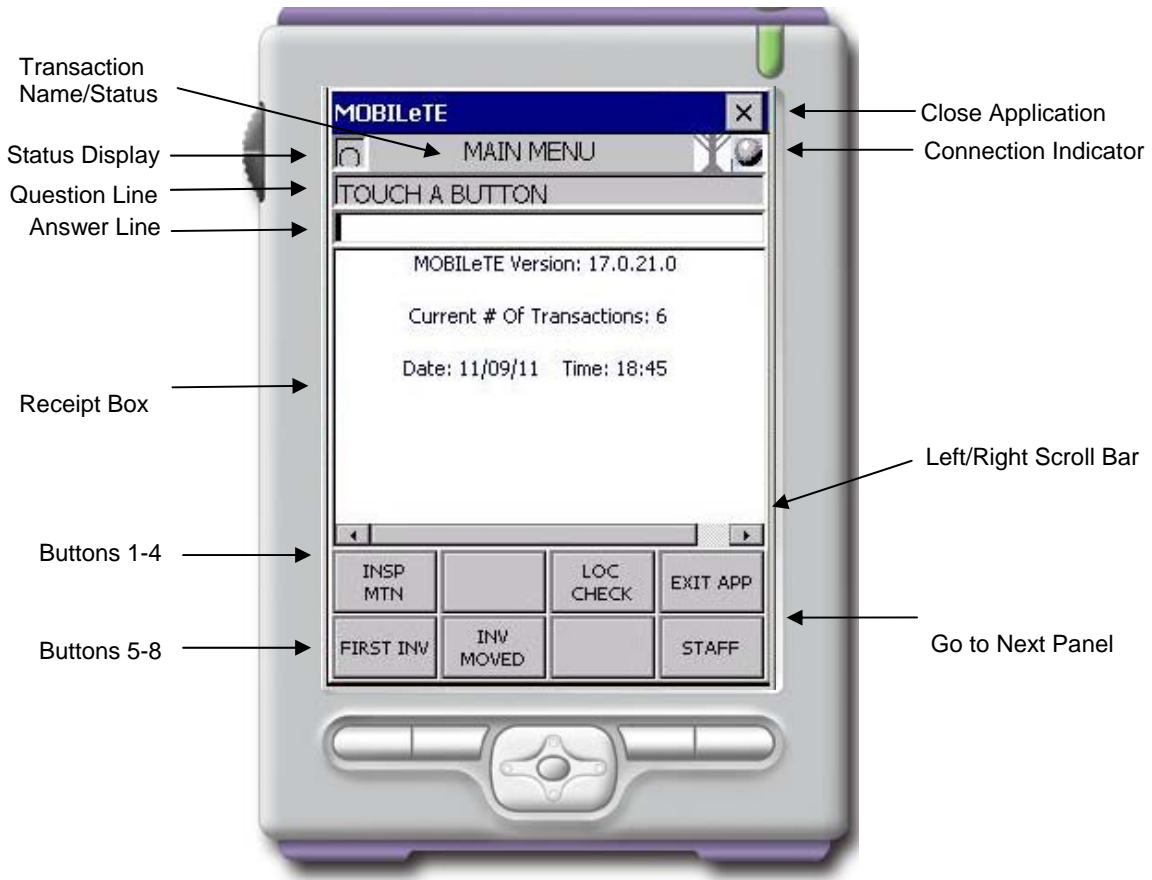
MOBILEINSPECTION requires the purchase of an approved PDT, a PC/laptop operating with internet access, and equipment registration labels.

System Components

PDT	User can select from any of the approved models.
MOBILEINSPECTION Labels	User can select from three standard label formats for equipment identification.
MOBILETE - MOBILEINSPECTION	The PDT application.
MOBILEDB – MOBILEINSPECTION	SQL based process for maintenance and reporting.

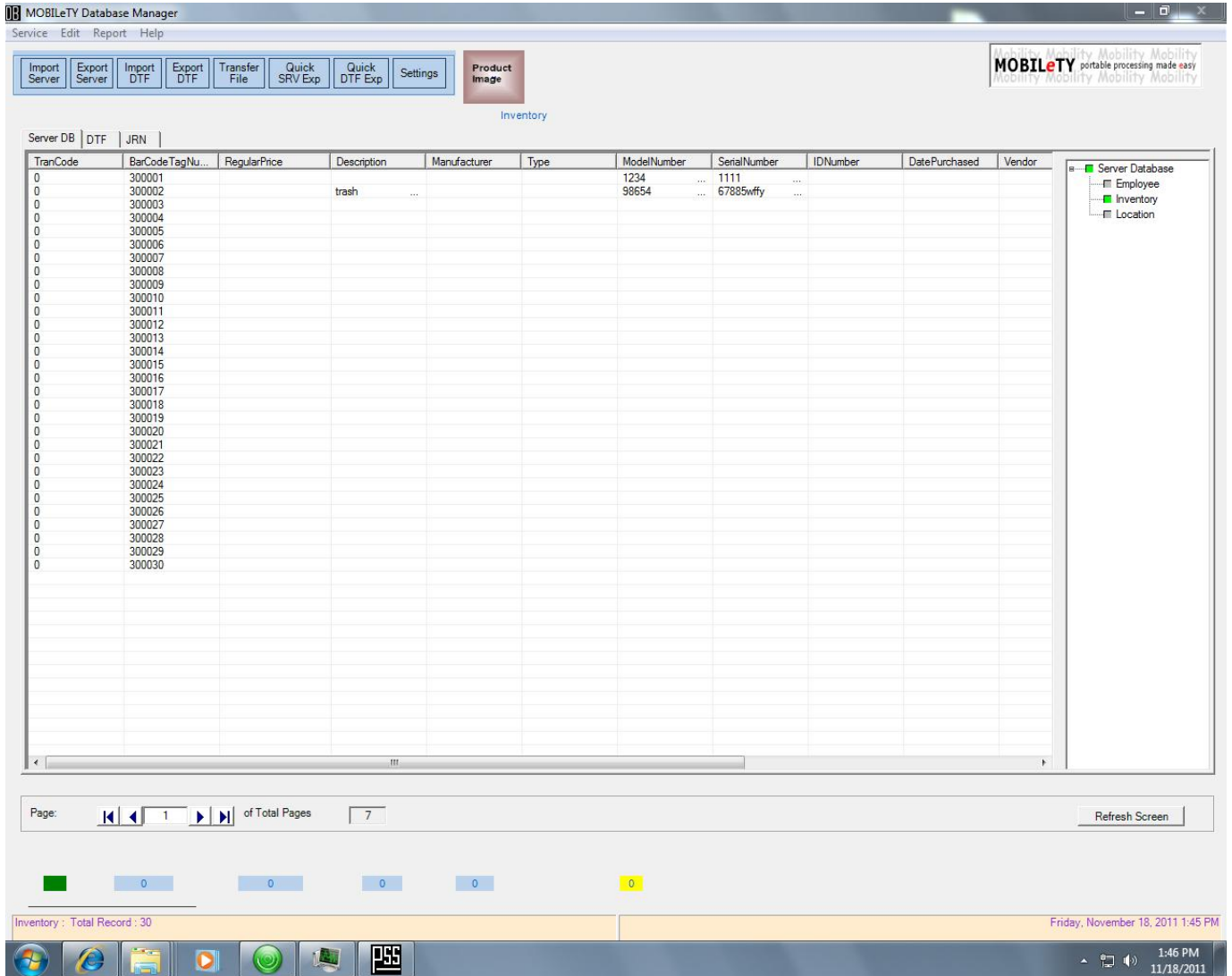
MOBILEINSPECTION Screen Display

The **MOBILEINSPECTION** PDT application is *powered by MOBILETY* using a fixed face format and an ATM styled user interface.



MOBILEDB - MOBILEINSPECTION Database Manager

MOBILEDB - MOBILEINSPECTION is a command and control console providing maintenance, editing, reporting, import, and export of the data used by the MOBILEINSPECTION system.



MOBILEDB uses the MSSQL database engine. MOBILEDB operates in Win7 or Windows Server 2005 or higher.



MOBILEDB Controls

Field Display Bar – Displays field data for the table highlighted in the table display window.

Server DB activates BCH_PDT2.MDB database. DTF activates DailyTransData.MDB database.

Opens Import Form for Table Selections
 Opens Export Form for Table Selections
 Opens DTF Import Selections
 Opens DTF Export Selections
 Opens Transfer of Files Selections
 Activates Quick SRV Export
 Activates Quick SRV Export
 Open Settings

Imported User Image

Item Picture

The screenshot shows the MOBILEDB Database Manager interface. At the top, there is a menu bar with options: Service, Report, Help. Below the menu bar is a toolbar with buttons: Import Server, Export Server, Import DTF, Export DTF, Transfer File, Quick SRV Exp, Quick DTF Exp, and Settings. A 'Product Image' button is also present. The main window has tabs for 'Server DB', 'DTF', and 'JRN'. The 'Server DB' tab is active, showing a table with columns 'DeptClassNumber' and 'Description'. The table contains five rows: 1 HOSE, 2 PPE, 3 SCBA, 4 EQUIPMENT, 5 VEHICLE. To the right of the table is a 'Table Display Box' showing a tree view of available tables: Server Database, DeptClass, Employee, Inventory, and Location. Below the table is a 'Field Display Bar' with a green square icon, four blue boxes containing '0', and a yellow box containing '2'. At the bottom right, there is a status bar showing 'Friday, January 20, 2012 1:58 PM'. Arrows point from various text labels to these elements in the interface.

Server DB | DTF | JRN

DeptClassNumber	Description
1	HOSE
2	PPE
3	SCBA
4	EQUIPMENT
5	VEHICLE

Page: 1 of Total Pages 1 Refresh Screen

Getting Record # 4

System Day, Date, Time
 Friday, January 20, 2012 1:58 PM

Communication Indicator
 Selected Table & Total Records in that Table
 Number of PLU/SKU Items in the Master Price Table
 Total DTF Tables Updated in this Session
 Page Forward, Backward, Total
 Total Audit Records Imported in this Session
 Number of Available Formats
 Cycling Counter
 Table Display Box (displays available tables in the Server DB or DTF DB)



MOBIL*e*INSPECTION Label Format

MOBIL*e*INSPECTION uses a set of AIDC barcoded labels for identification of the product. However, custom label stock and formats can be designed and created.

MOBIL*e*INSPECTION – Label Format Sample



MOBILEINSPECTION Import/Export Templates

Import

MOBILEINSPECTION provides a template for importing all of the system files.

This allows for easy integration with the municipal system without the requirement to re-key.

The format template allows for the export of the file from the user's ERP system in a standard .CSV format and can be imported automatically or manually to the **MOBILEINSPECTION** system. Below is the outline of the template for importation.

Example of Employee.Txt File:

```
1      2                3  
1111,Smith                ,Joe                ,,,,,,|
```

Field #	Description
1	Employee Number
2	Last Name
3	First Name

Export

MOBILEINSPECTION powered by **MOBILETY** provides a template for exporting the data file.

This can be used for external analysis of the **MOBILEINSPECTION** system usage.

The export template allows for the creation of a file in a standard .CSV structure. Export is manually initiated from the **MOBILEVE** console. Below is an example of the export file and the file values.

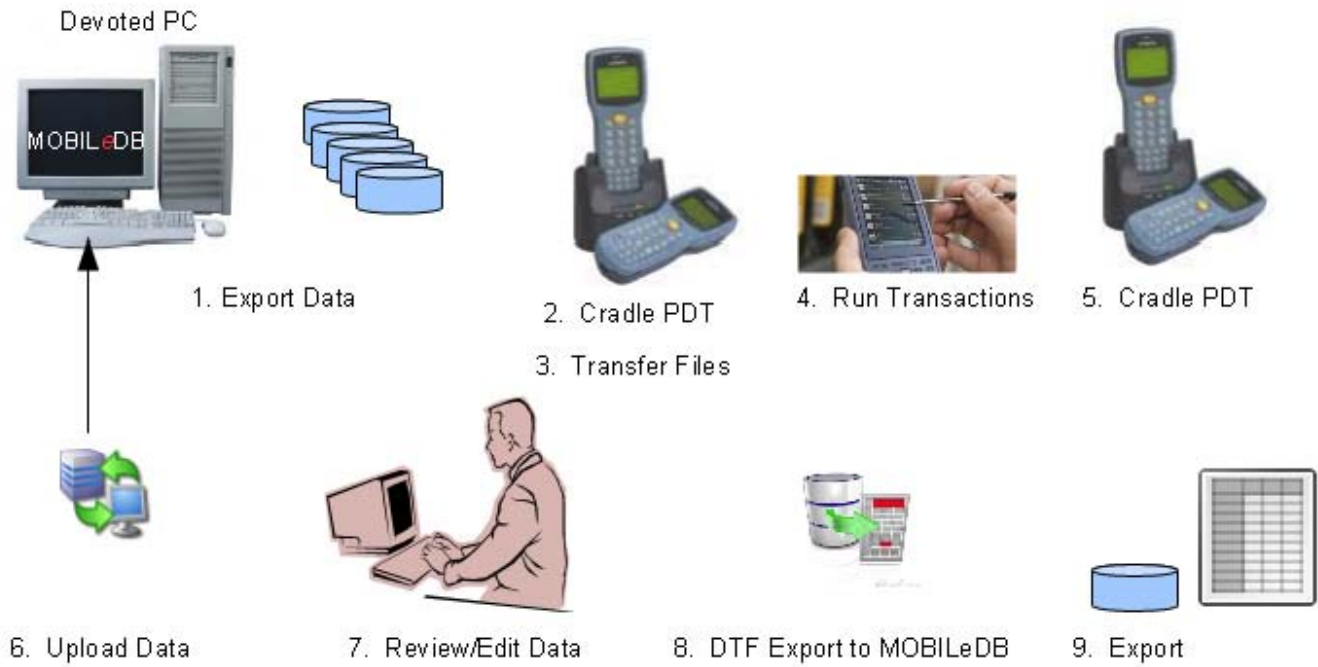
Example of the inspection maintenance data:

```
1      2      5      10      13
300001,10,,,ladder      ,,,,,,21,,,type 1
      14      15      16      17
,123456789012345      ,676767a      ,76543      ,11/01/2011
      18      19      20      22
,millers      ,IN      ,0 NONE      ,,0000059999|
```

Field #	Description
1	Barcode Item Number
2	No Tax
5	Manufacturer
10	Alpha Look-Up
13	Type
14	Model Number
15	Serial Number
16	ID Number
17	Date Purchased
18	Vendor name
19	In or Out of Service
20	Location
22	Item Cost

MOBILEINSPECTION Communication Environments

MOBILEINSPECTION powered by **MOBILETY** can operate in either a batch USB, WiFi, or broadband communication environment.



MOBILEINSPECTION Reports

Date: 11/21/2011		MOBILEFE					Page 1 of 1				
Time: 11:41:21 AM		FE_Equipment Update Report									
BarCode TagNumber	Description	Location	InOut Service	Model Number	Serial Number	Manu facturer	Type	IDNumber	Vendor	Regular Price	Date Purchased
300004	22	1 OUT OF SERVICE	IN	123	321						
300005	888	0 NONE	IN	664	456						
EndOfReport											

Date: 11/21/2011		MOBILEFE			Page 1 of 1	
Time: 11:45:53 AM		FE_Inspection Maintenance				
SKU Number: 300002						
BarCode TagNumber	Description	InOut Service	Model Number	Serial Number		
300002	misc item	OUT	9879543	35353535		
Date	Time	TestType	Pass/Fail	Notes		
11/20/2011	07:36:00 AM	AnnualTest	PASS	no notes		
11/20/2011	07:36:00 AM	123	IN	22		
01/01/2009	08:24:00 AM	AnnualTest	PASS			
EndOfReport						

PDTN09258



MOBILEINSPECTION Reports (Cont.)

Date: 11/21/2011		MOBILEFE						Page 1 of 9			
Time: 11:42:28 AM		FE_Full Bar Code Listing									
BarCode TagNumber	Description	Location	In/Out Service	Model Number	Serial Number	Manu facturer	Type	IDNumber	Vendor	Regular Price	Date Purchased
300001	soba regulator	SPARE SEAT2	IN	123456789012345	876787a	dan inc	type 1	78543	millers	599.99	11/01/2011
300002	misc item	2 REPAIR	OUT	9876543	35353535	rob inc	type 2	abodefg	moores	9090.99	1/1/2010
300003	dans stuff	E2 SEAT1	IN	55555555	22222222	joe inc	type 3	idnumber1	smiths	9.99	5/10/10
300004	22	1 OUT OF SERVICE	IN	123	321						
300005	888	0 NONE	IN	654	456						

Date: 11/21/2011		MOBILEFE						Page 1 of 1			
Time: 11:49:38 AM		FE_InventoryLocationReport									
BarCode TagNumber	Description	Location	In/Out Service	Model Number	Serial Number	Manu facturer	Type	IDNumber	Vendor	Regular Price	Date Purchased
300001	soba regulator	SPARE SEAT2	IN	123456789012345	876787a	dan inc	type 1	78543	millers	599.99	11/01/2011
300002	misc item	2 REPAIR	OUT	9876543	35353535	rob inc	type 2	abodefg	moores	9090.99	1/1/2010
300003	dans stuff	E2 SEAT1	IN	55555555	22222222	joe inc	type 3	idnumber1	smiths	9.99	5/10/10
300004	22	1 OUT OF SERVICE	IN	123	321						
300005	888	0 NONE	IN	654	456						
EndOfReport											

PDTN09258



MOBIL*e*INSPECTION System Requirements

System Requirements

PC Console

Hardware PC: CPU 2.0GHz or Higher, 1GB RAM or Higher
Operating System: Windows Server 2003, Standard SP3, Windows 7 Pro, 32 Bit
Additional Items: 2GB Free Disk Space

PDT Options

Hardware PDT: Unitech HT680, Model HT680-9550-UADG
Operating System: WinCE V5.0
Features: Scanner, Cradle
Additional Software: ActiveSync V4.x



Hardware PDT: Honeywell 9700, Model 9700HB-1
Operating System: WinMobile 6.5
Features: Imager, Cradle
Additional Software: ActiveSync V4.x



Hardware PDT: Honeywell Marathon 2, Model DVT5
Operating System: WinXP
Features: Imager, Cradle
Additional Software: ActiveSync V4.x



PDTN09258